



Figure 1A. Screen of Additional Agents to Modulate rAAV Transduction- HeLa ATCC

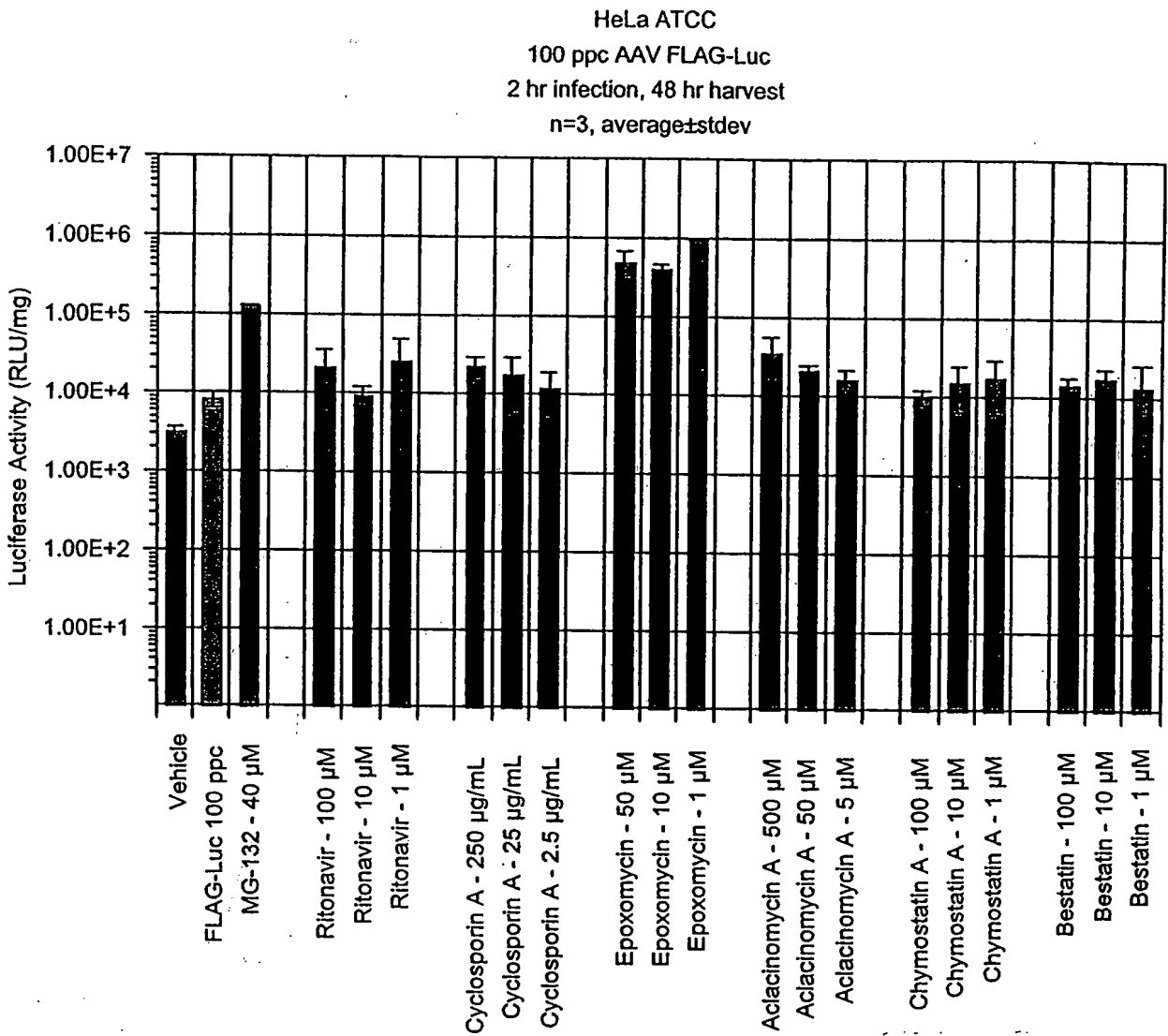


Figure 1B. Screen of Additional Agents to Modulate rAAV Transduction HeLa ATCC ±

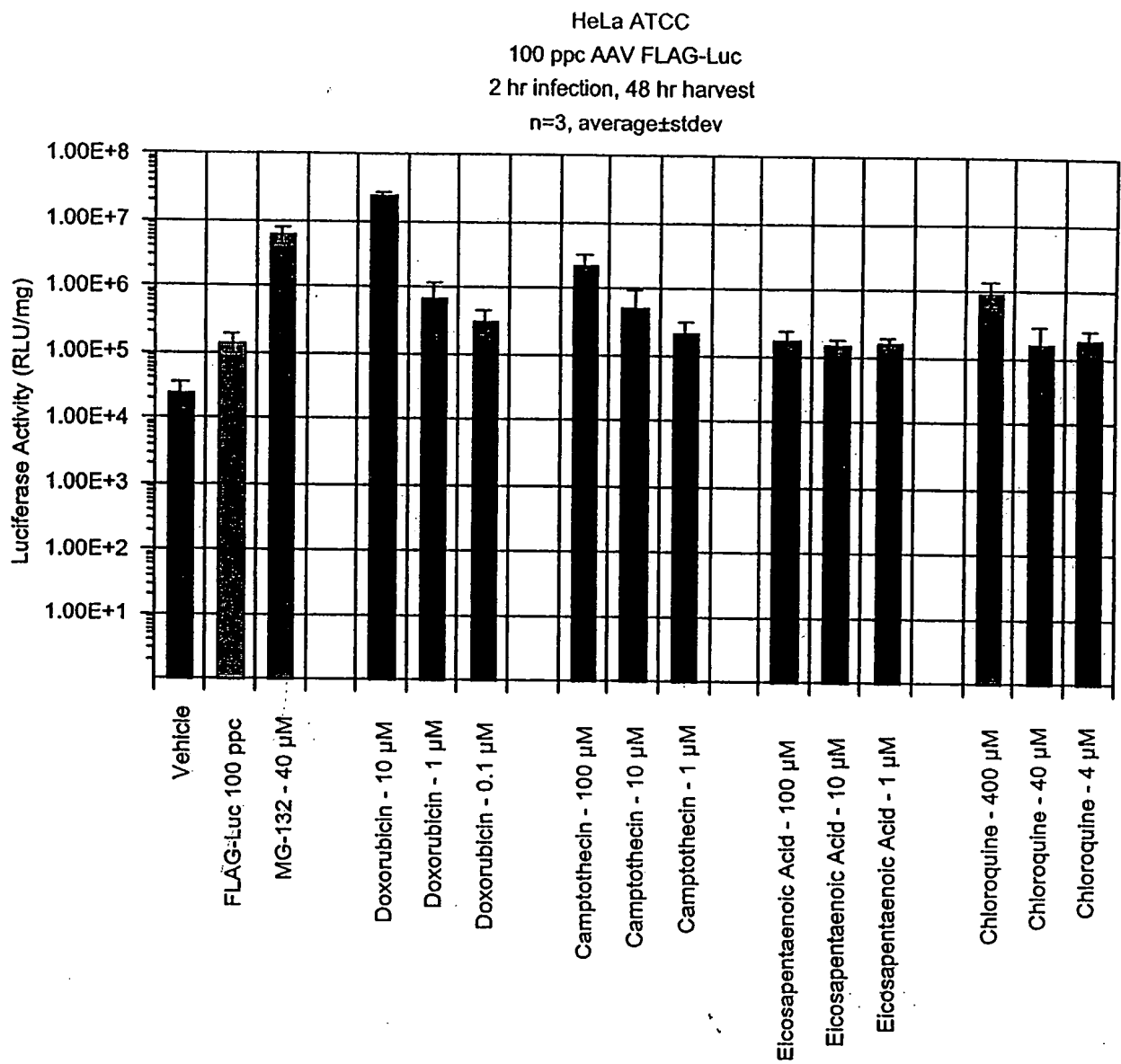


Figure 1C. Screen of Additional Agents to Modulate rAAV Transduction- HeLa ATCC

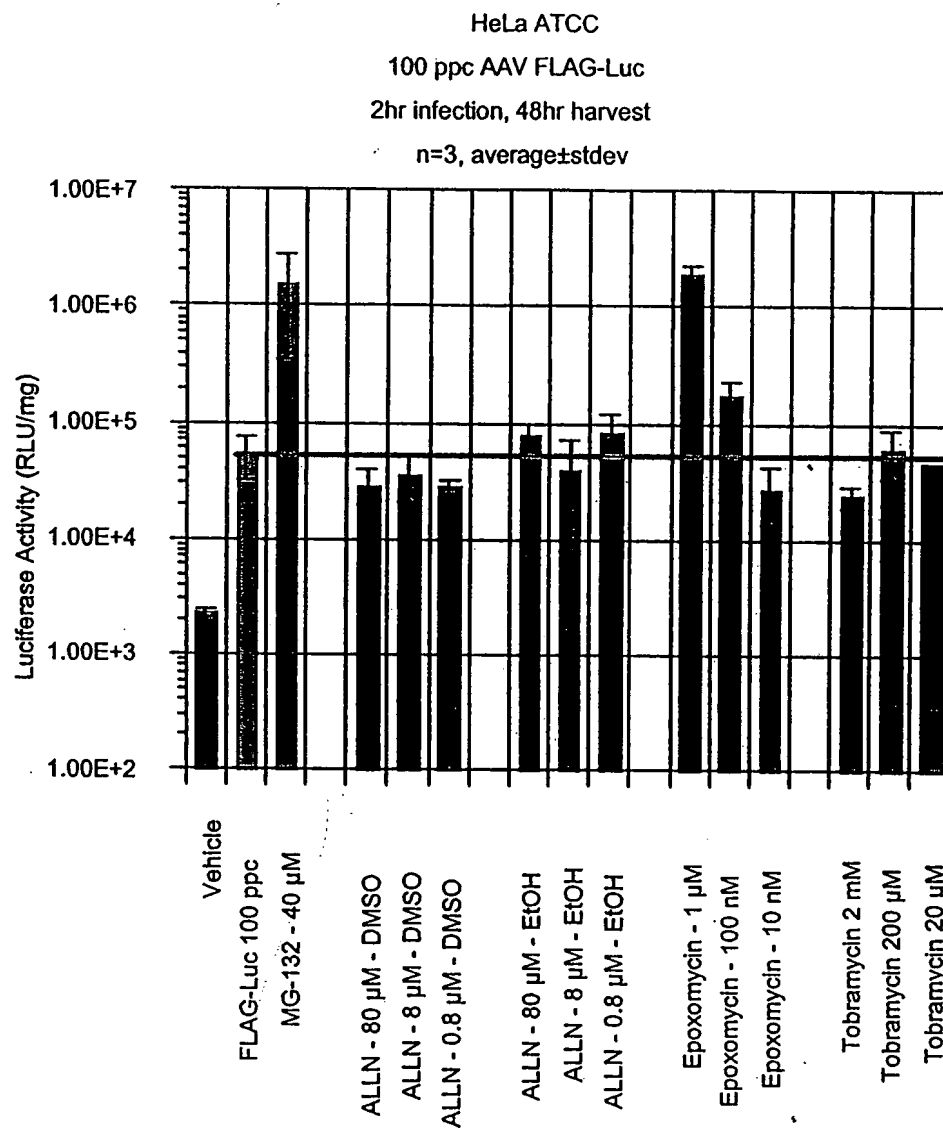


Figure 1D . Screen of Additional Agents to Modulate rAAV Transduction- HeLa ATCC

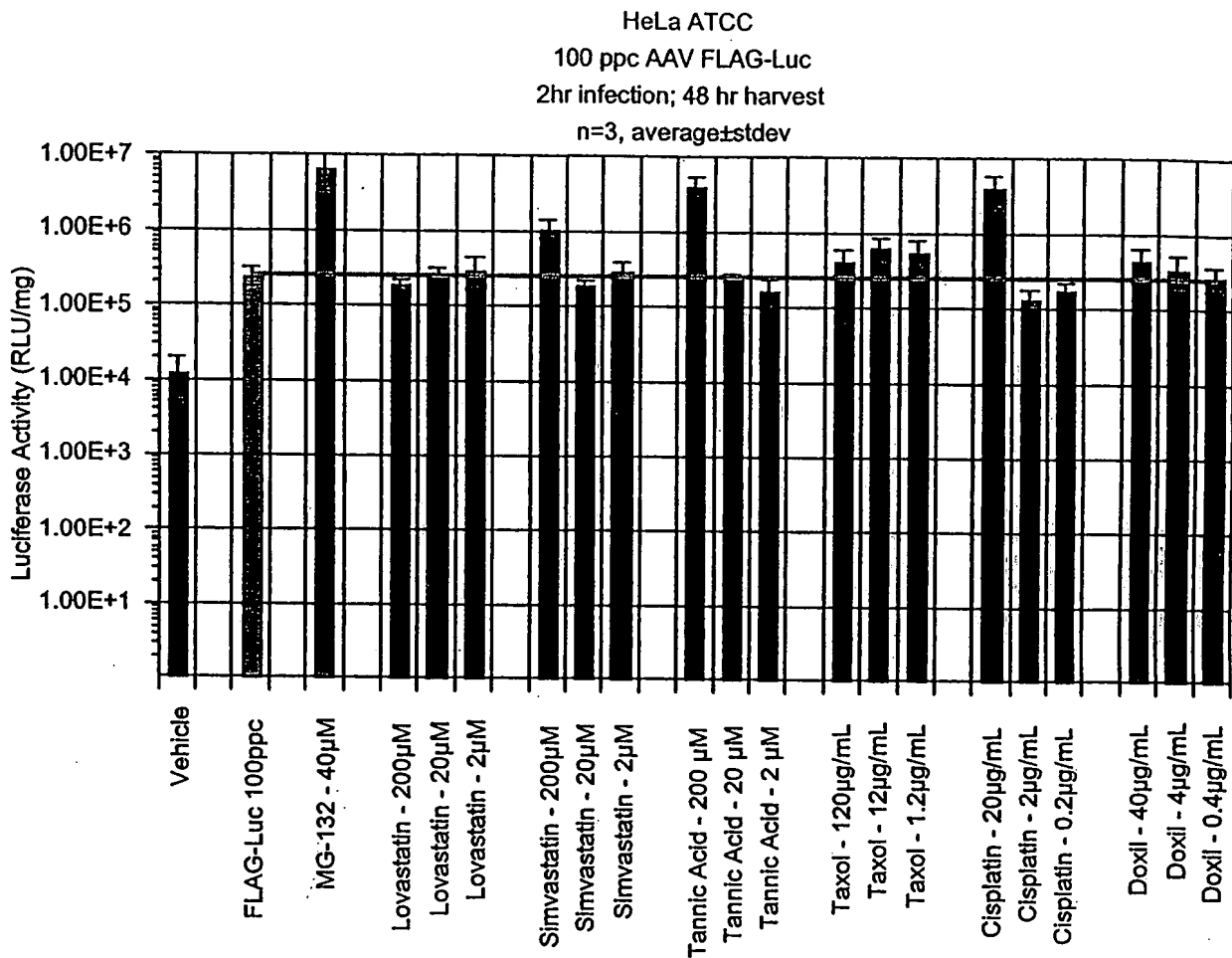
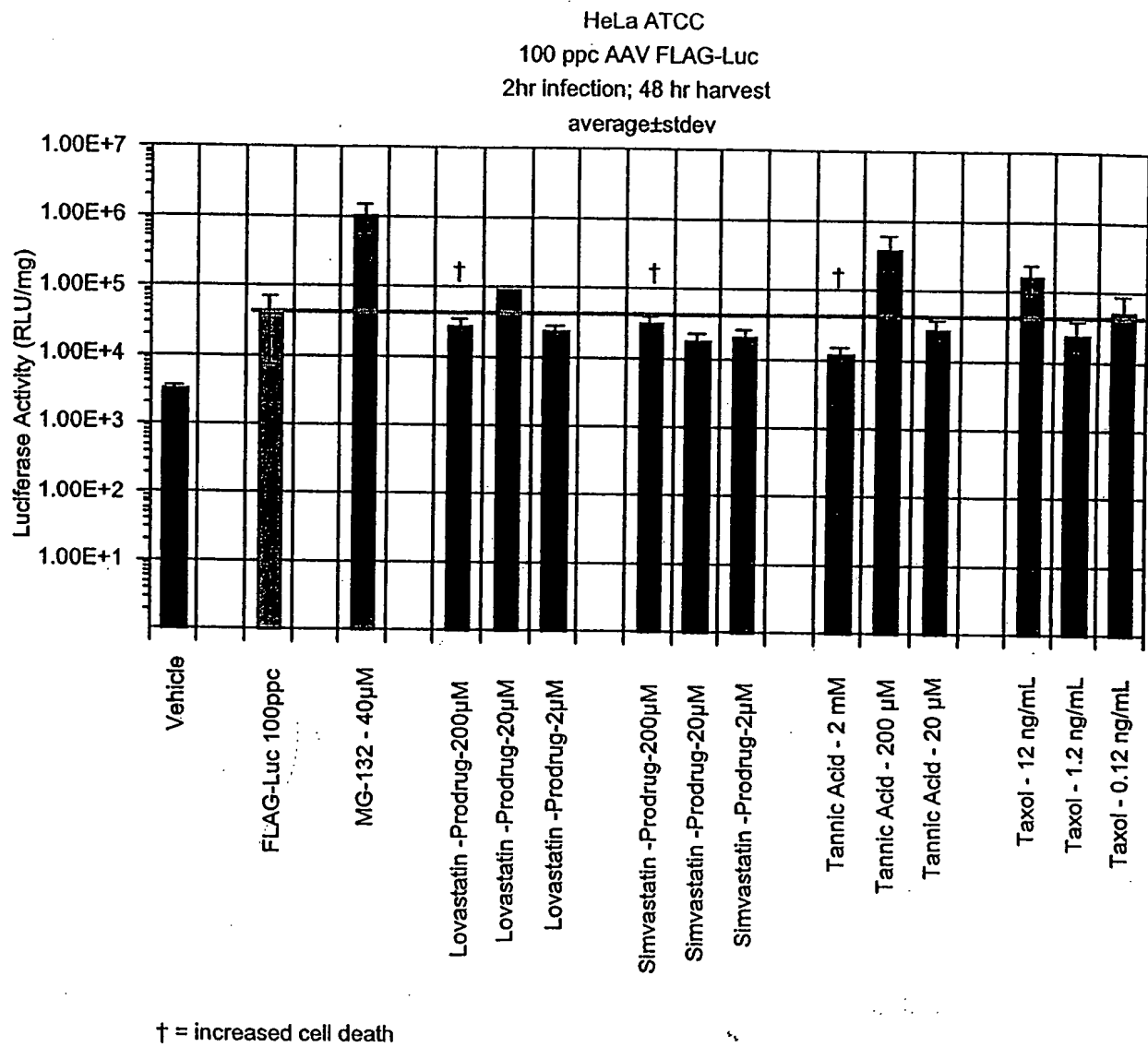
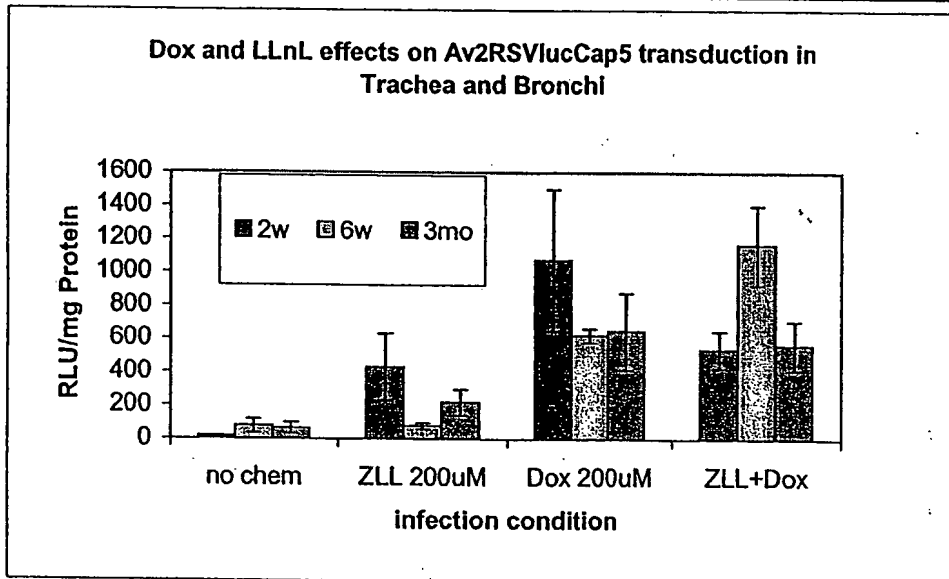
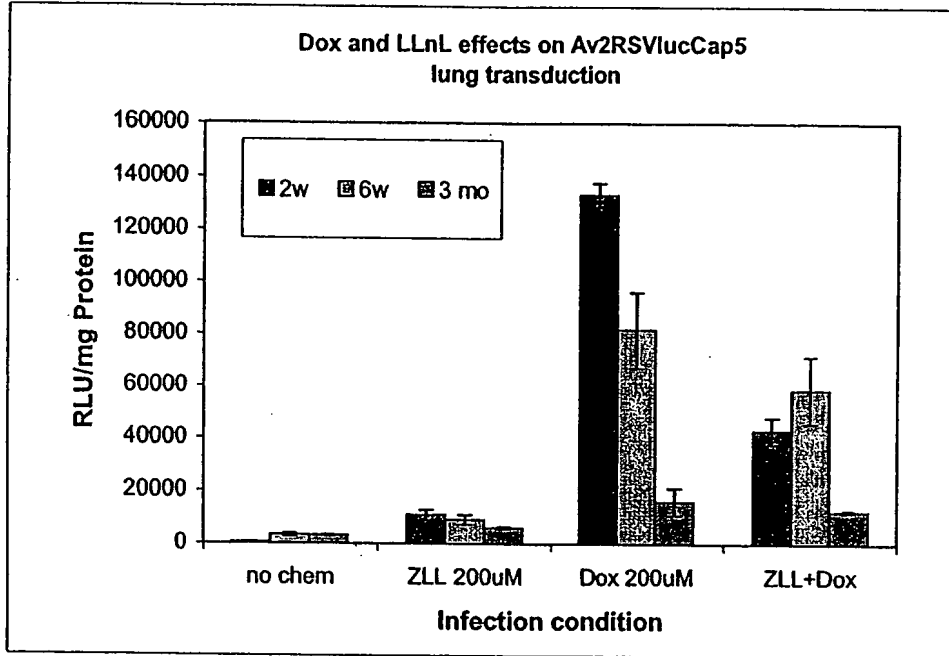


Figure 1E . Screen of Additional Agents to Modulate rAAV Transduction -HeLa ATCC ±



lung	2w	6w	3 mo	std err-2	std err-6	std err-3 mo
no chem	471	3323	3184.23	198	794	242
ZLL 200uM	10939.21	9139	6183	1952	1782	410
Dox 200uM	133141	81639	16109	4537	14574	5201
ZLL+Dox	42867	58509	12453.8	5152	12900	449
T & B	2w	6w	3mo	std err-2	std err-6	std-3 mo
no chem	18.15	76.37	64	2.1	42	34
ZLL 200uM	428	76.49	218	201	18	78
Dox 200uM	1071	619	646	426	41	231
ZLL+Dox	537	1165	561	110	238	148

**Note**

AV2RSVlucCap5 of 6×10^{10} total viral particles was used to infect mouse lung through 3 time nasal aspiration 2 weeks, 6 weeks and 3 months after infection, killed mice and extracted luciferase from the infected tissue

Luciferase assay was performed at 80% sensitivity

The RLU/mg protein reflects the total enzyme activity /total protein in the tissue extraction solution

FIG. 2

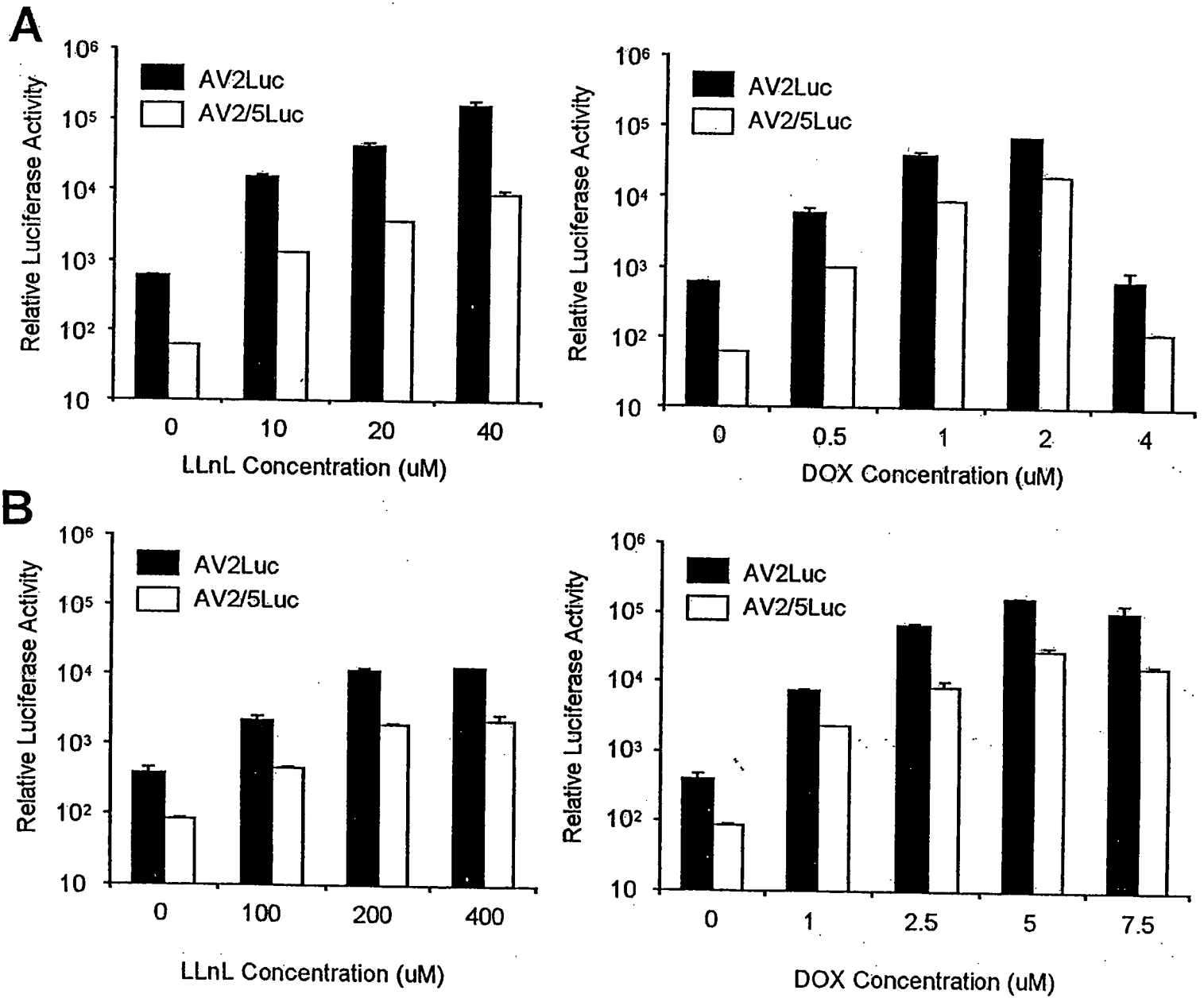


FIG. 3

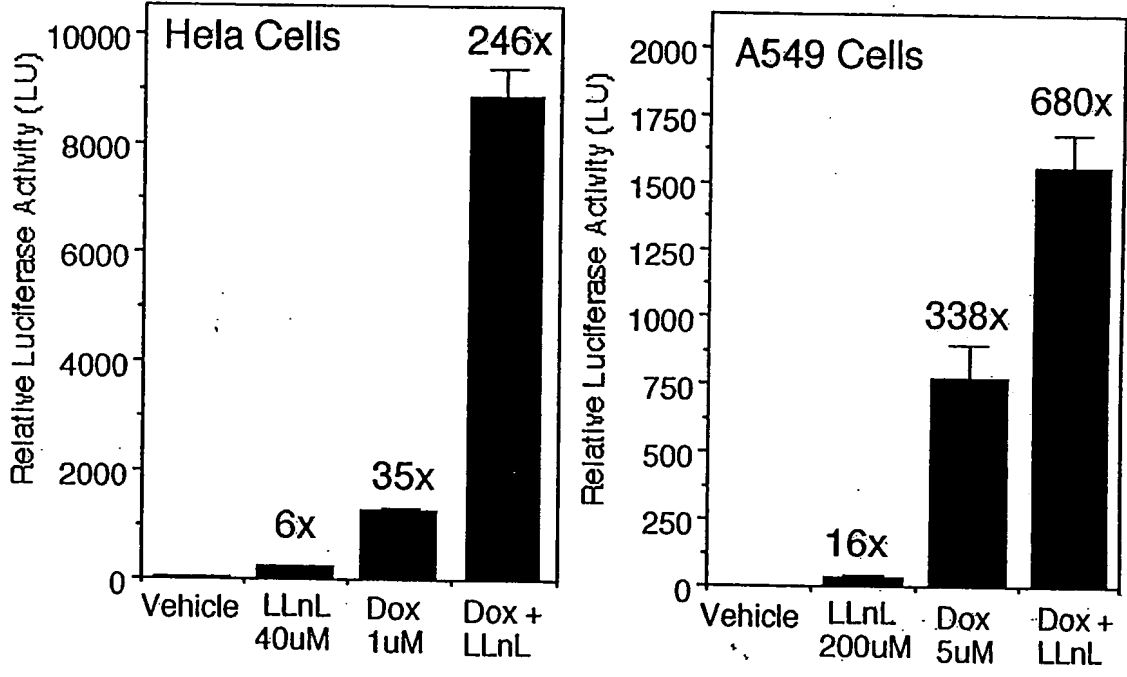


FIG. 4

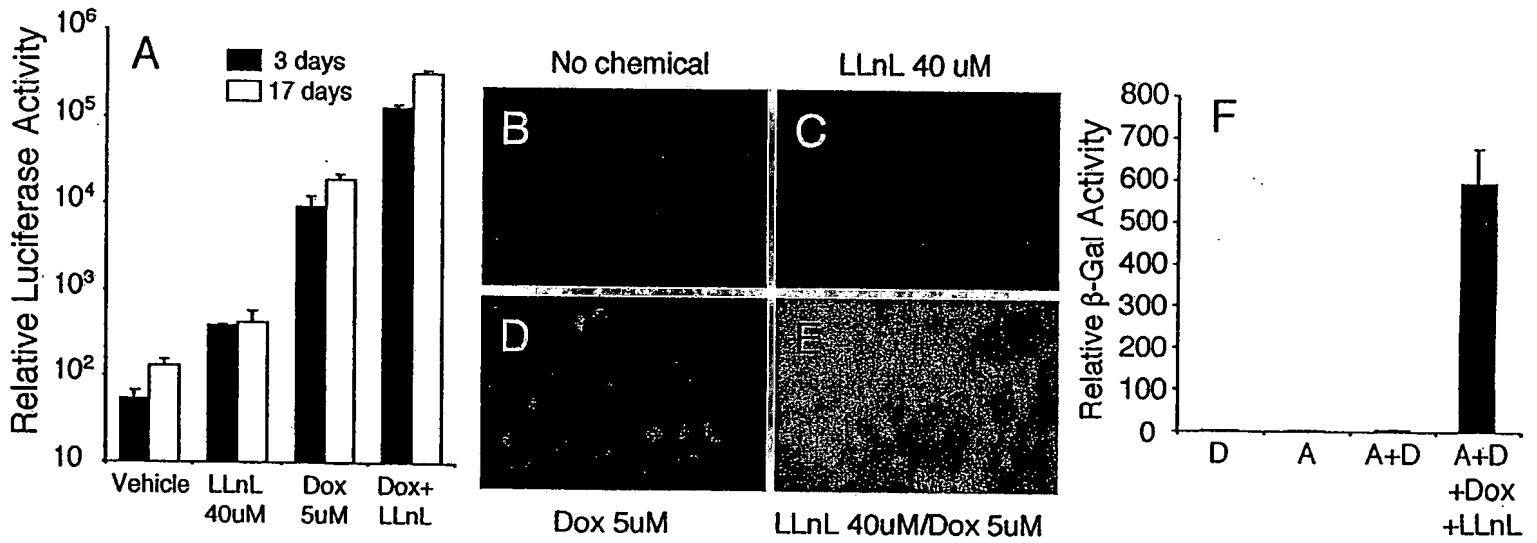


FIG. 5

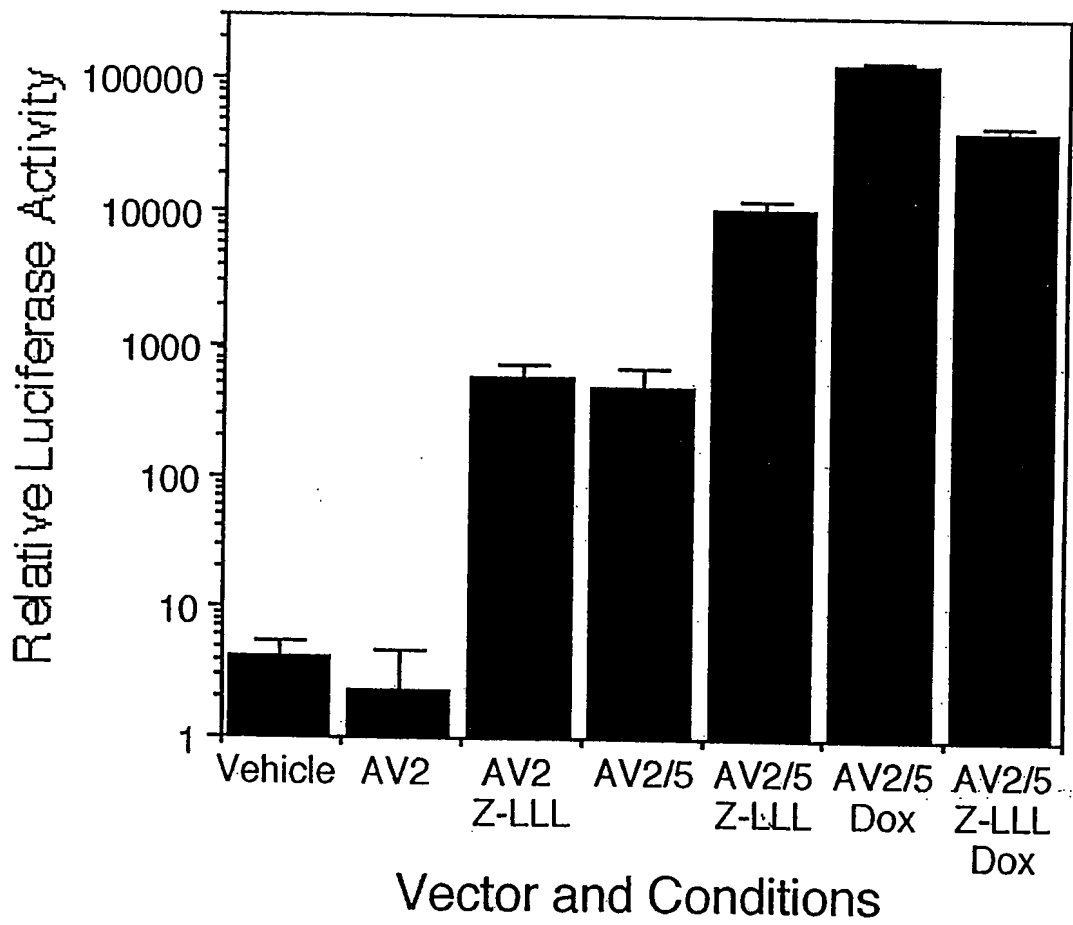


FIG. 6

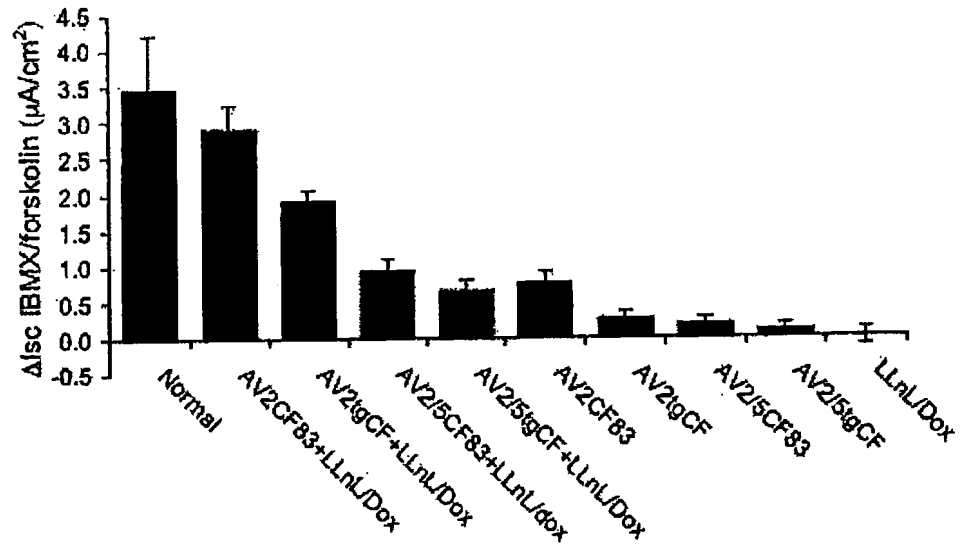


FIG. 7

FIG. 8A

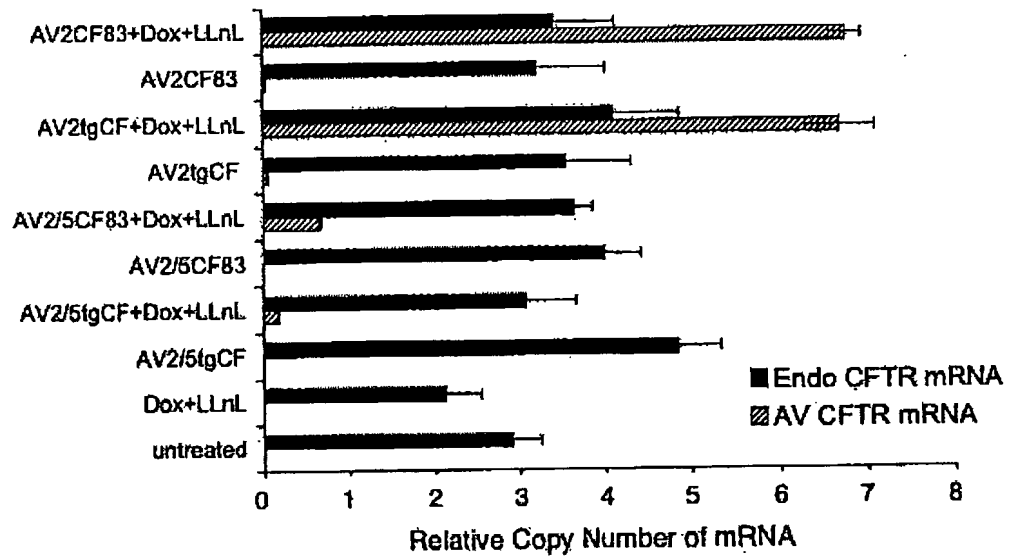


FIG. 8B

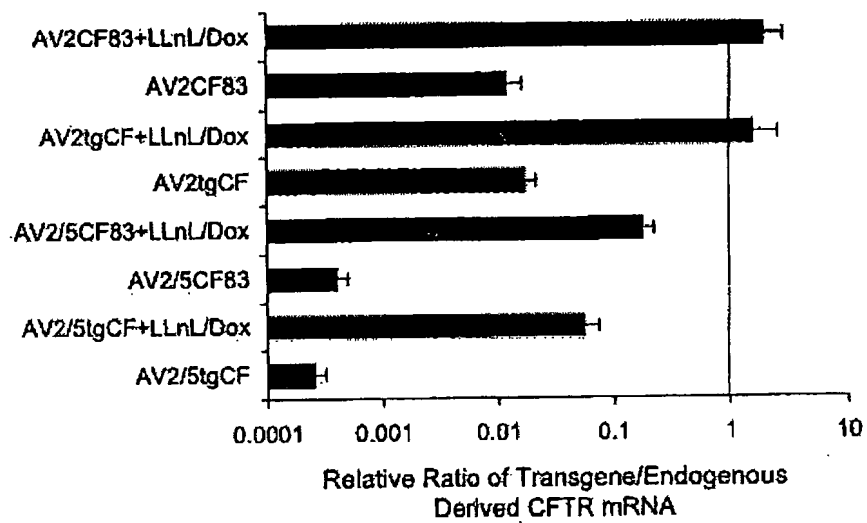


FIG. 9A

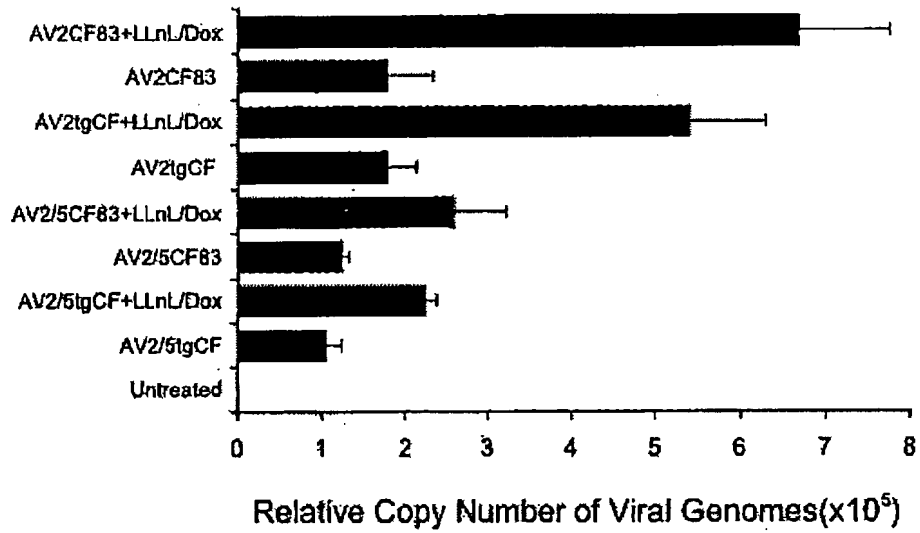


FIG. 9B

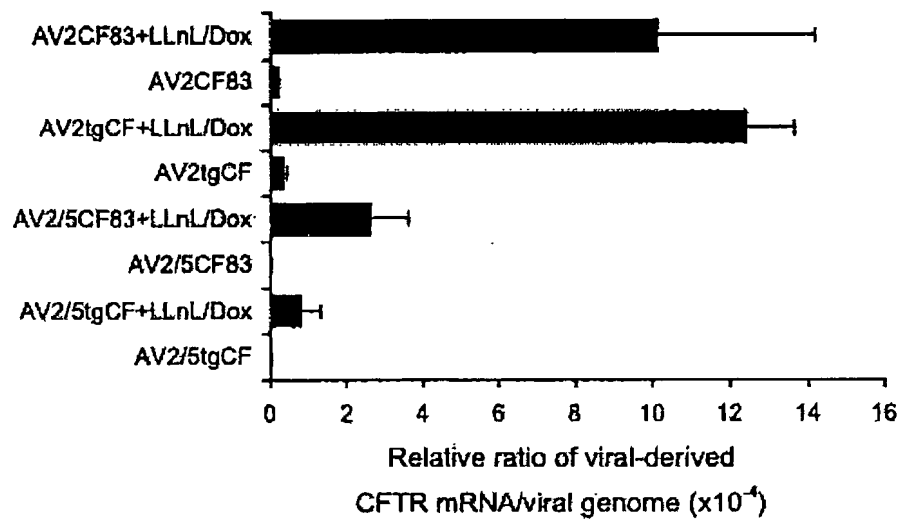


FIG. 10A

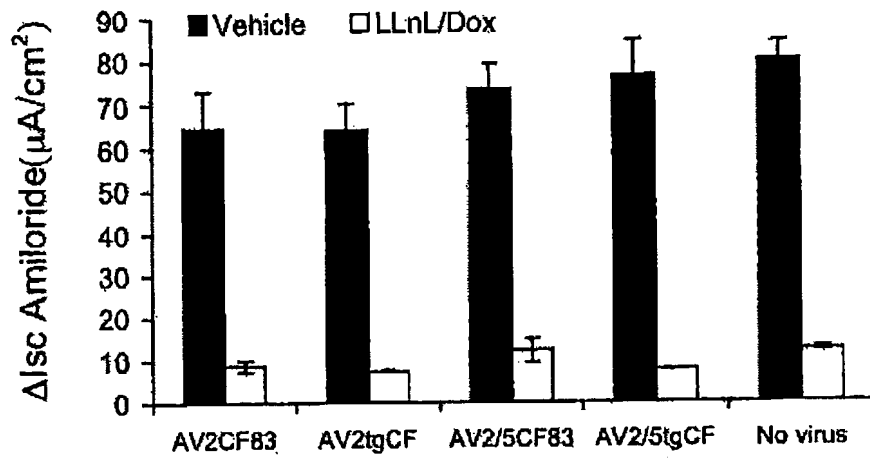


FIG. 10B

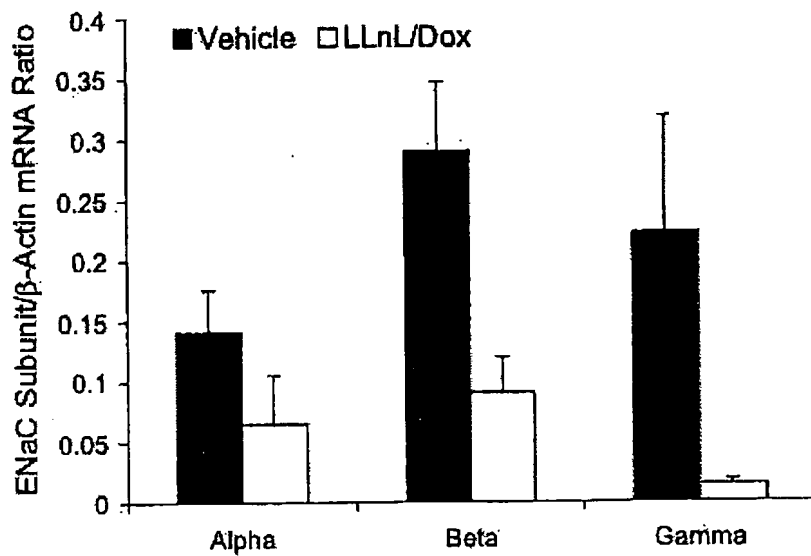


FIG. 10C

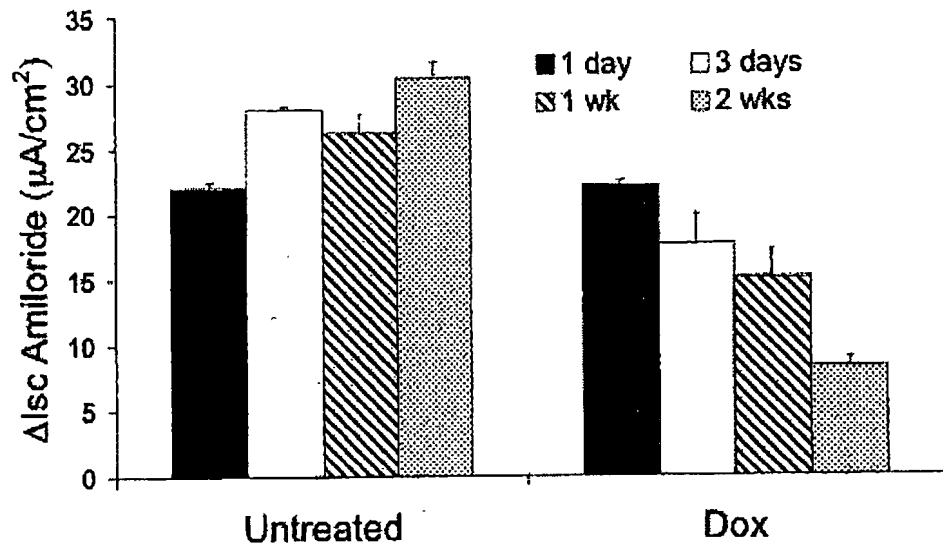


FIG. 11A

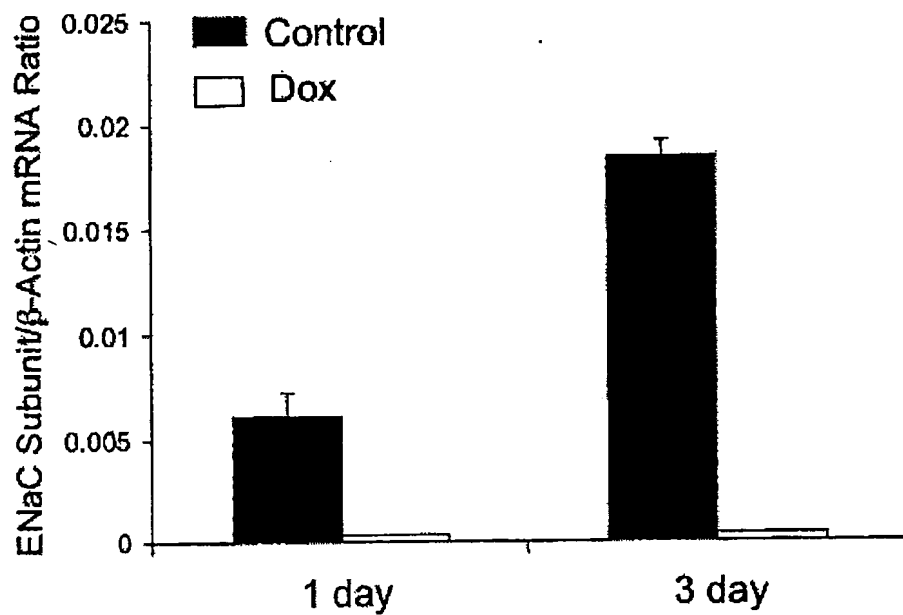


FIG. 11B

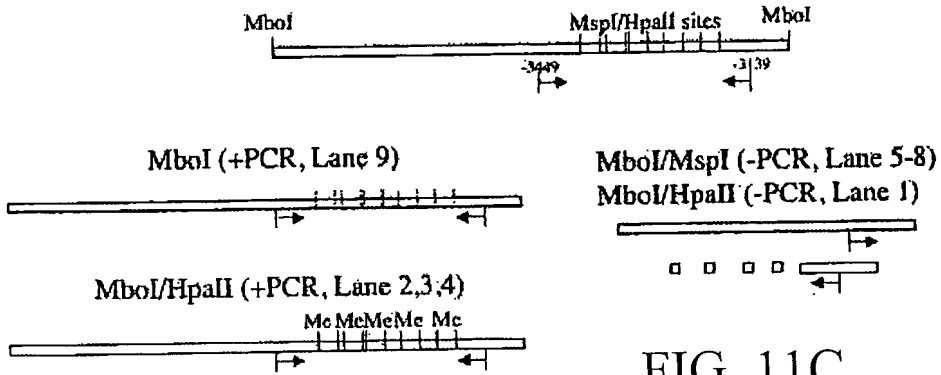
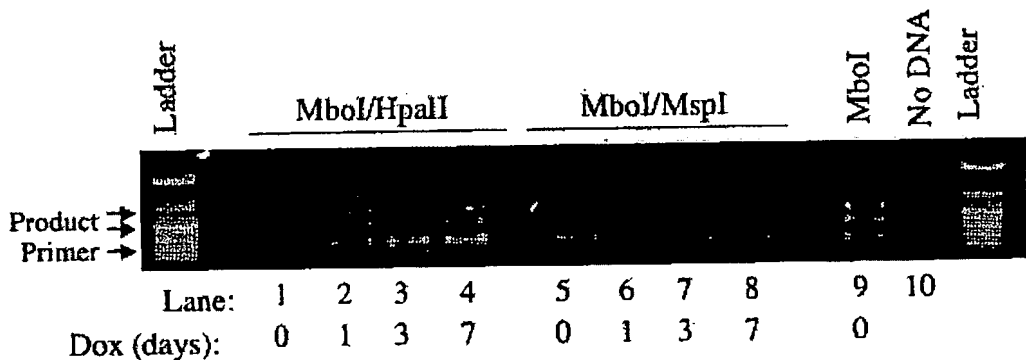
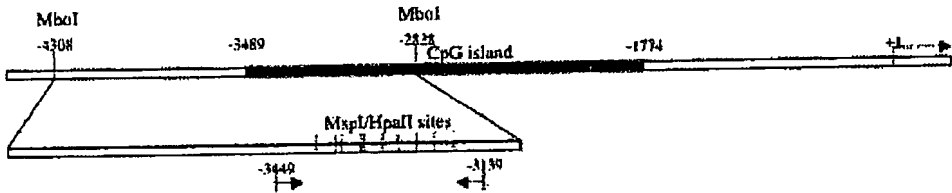


FIG. 11C

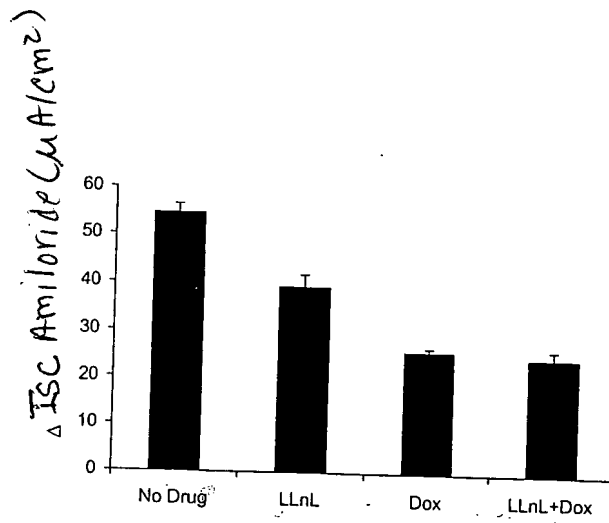


FIG. 12

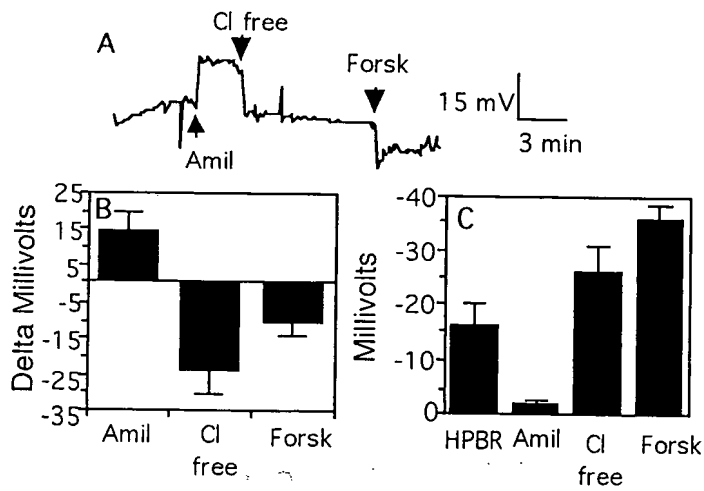


FIG. 13